

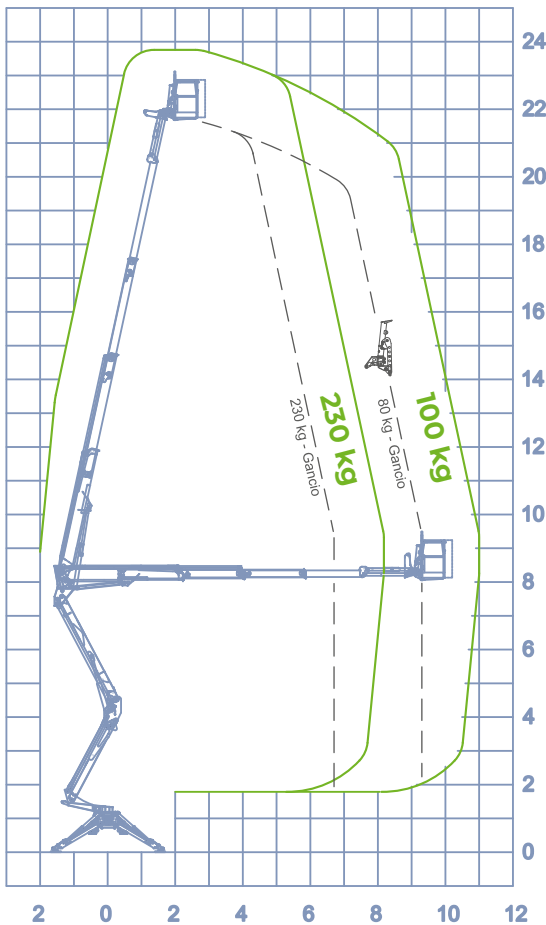


STANDARD ACCESSORIES

DATA SHEET

- Undercarriage hydraulically expandable
- White non marking tracks
- Electric hour-counter
- Manual hand pump
- 230V electric socket in the basket
- Multifunction radio control
- Auxiliary electric pump 230V-50Hz
- Flanged holding valves
- Diesel engine
- Outrigger plates
- **Automatic closing**
- **Automatic stabilization**
- **Removable basket**

WORKING DIAGRAM



INFO

- OUTRIGGERS
Z+Z
- WORKING HEIGHT
23,80 m
- BASKET HEIGHT
21,80 m
- MAX OUTREACH
11,00 m
- BASKET LOAD CAPACITY
230 kg
- BASKET SIZE
1400 X 700 X 1100 mm
- CONTROLS
Electro - Hydraulic
- TURRET ROTATION
380°
- GVW
2,6 ton
- SIZE
2845 x 2855 mm
3010 x 3190 mm
- BASKET ROTATION
60° + 60°
- LIFTING HOOKN
230 kg

SIZE

